



MT-05 R4.2, R6 & R8 Thermal Sleeve

PRODUCT DATA & SUBMITTAL

PHYSICAL DESCRIPTION

MT-05 (5' length) thermal sleeve, designed to insulate round metal duct is constructed with fiberglass insulation and a reinforced metalized vapor barrier. Thermal sleeve available in choices of MT-05, MT-05R6 & MT-05R8 (R4.2, R6 & R8 insulation).

PRODUCT DATA

Diameters: 4", 5", 6", 7", 8", 9", 10", 12", 14", 16", 18"
(equivalent round pipe size)

Length: 5 foot section

R-Values: R4.2, R6 & R8

Packaging: Individual 5' section tightly rolled and packaged in multiple sections per carton

Vapor Barrier: 2-Ply Reinforced Metalized Polyester

Starter Caps: 1 each per master carton

PERFORMANCE DATA

Thermal Value: R4.2, R6 & R8 thermal values are calculated in accordance with ASTM C-518 at installed wall thickness of the flat insulation only. R-Value based on insulating same diameter duct.

Vapor Barrier: Thermal sleeves are for indoor applications and should not be exposed to direct ultraviolet light.

Operating Temperature: -20° F to 200° F

Permeance of Vapor – Barrier: 0.01 US Perms per ASTM E96A-94.

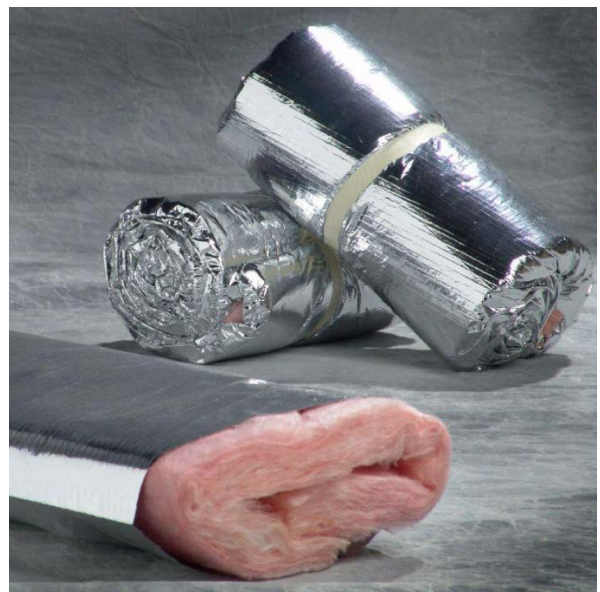
Code Compliance: UL Classified Pipe and Equipment Covering. FHC Flame Spread 25 or less / Smoke Developed 50 or Less.

FEATURES & BENEFITS

UL Listed & Labeled Pipe & Equipment Covering
10 Year limited warranty
Quick, easy and economical to install
Excellent permeance rating
Guaranteed 5' lengths
Formaldehyde Free (see www.jplflex.com for more info)
GREENGUARD Gold Certification

PACKAGING DATA PER CARTON

| DIA | MT-05 PCS/FT | MT-05R6 PCS/FT | MT-05R8 PCS/FT |
|-----|-----------------|-------------------|-------------------|
| 4" | 24 pcs/120' | 15 pcs/75' | 15 pcs/75' |
| 5" | 24 pcs/120' | 15 pcs/75' | 15 pcs/75' |
| 6" | 24 pcs/120' | 15 pcs/75' | 15 pcs/75' |
| 7" | 24 pcs/120' | 15 pcs/75' | 15 pcs/75' |
| 8" | 24 pcs/120' | 15 pcs/75' | 10 pcs/50' |
| 9" | 15 pcs/75' | 15 pcs/75' | 10 pcs/50' |
| 10" | 15 pcs/75' | 15 pcs/75' | 10 pcs/50' |
| 12" | 15 pcs/75' | 10 pcs/50' | 10 pcs/50' |
| 14" | 15 pcs/75' | 10 pcs/50' | 10 pcs/50' |
| 16" | 15 pcs/75' | 10 pcs/50' | 10 pcs/50' |
| 18" | N/A | N/A | 10 pcs/50' |



About **JPL**

JPL has been manufacturing flexible air duct for 50 + years, dating back to 1961. The company's success and growth has been built on reputation of providing quality, service, competitive pricing, integrity and innovation. The company presently has four manufacturing plants located in California, Colorado, Tennessee and Florida. **JPL** proudly offers all of its insulated flex ducts & thermal sleeves with a 10-year limited warranty, UL listings and Certified R-Values.



TEN YEAR LIMITED WARRANTY

JPL warrants that all of its UL-181 Flexible Air Ducts & Thermal Sleeves (the "Product") will be free from defects in materials and workmanship under normal use for a period of ten (10) years from date of manufacture.* This warranty shall apply only to the Product when installed in the U.S.A. in accordance with **JPL** written installation instructions and within the conditions and limitations of the published performance data.

**Contact Company for details and limitations*



◆ Specifications subject to change without notice. ◆

Proper installation of these products shall be in accordance with UL-181 and ADC recommended installation instructions in each package.

www.jpflex.com